

24TH ANNUAL GLOBAL
NAUTICAL SYSTEMS

USER CONFERENCE



Emissions: MRV, Fuel EU, EU ETS

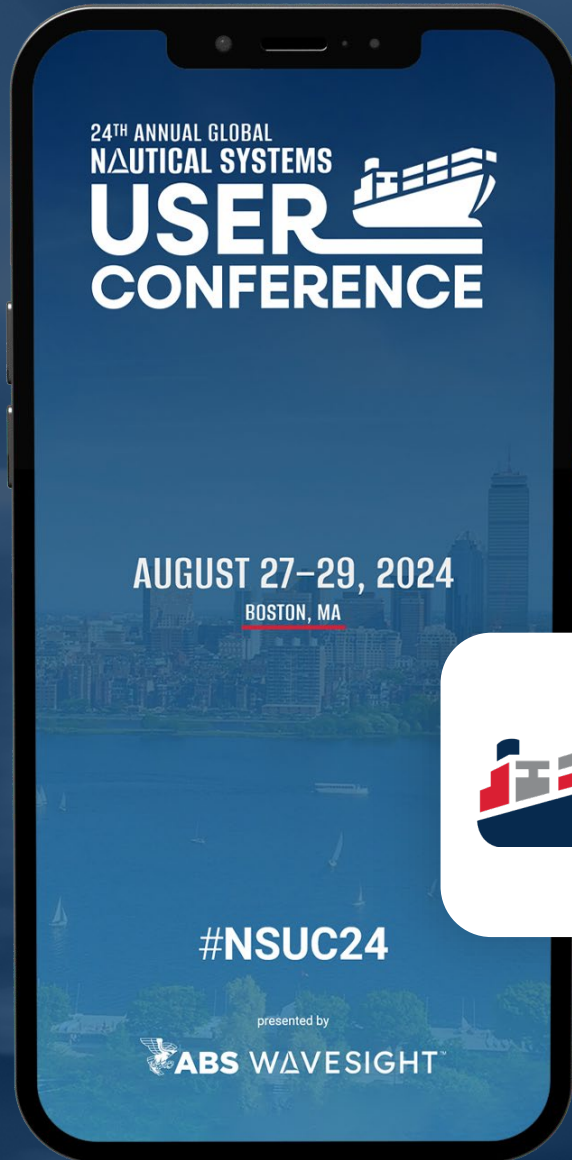
Divya Iyer | Samir Aragon

9/12/2024

Presented by



ABS WAVESIGHT™



GET ON THE LEADERBOARD!

REMINDER: You can earn points during this session! Submit your questions, answer polls and leave feedback on this presentation through the NSUC24 mobile app.

The more you use the app, the more points you earn. Winners will be announced daily.



Divya Iyer

Product Manager

Divya has 16+ years of experience in the maritime industry. Prior to joining ABS Wavesight, Divya worked as an engineer onboard oil/gas tankers with Chevron, where she sailed as a Second Assistant Engineer and later as a Vessel Performance Manager with Maersk Tankers managing fuel optimization and energy efficiency for their commercial pool vessels.



Samir Aragon

Product Manager

Prior to joining ABS Wavesight, Samir has spent 24 years in enterprise applications and platforms working in Product Management in various industries and verticals including Supply Chain and Logistics, Oil and Gas, Telecom, Automotive, Document Management, Process Automation, Travel and Pricing.

Fuel EU, MRV, EU-ETS: An Open Forum

New regulations in a nutshell

5 minutes

Pain points and concerns

10 minutes

Pressing questions

10 minutes

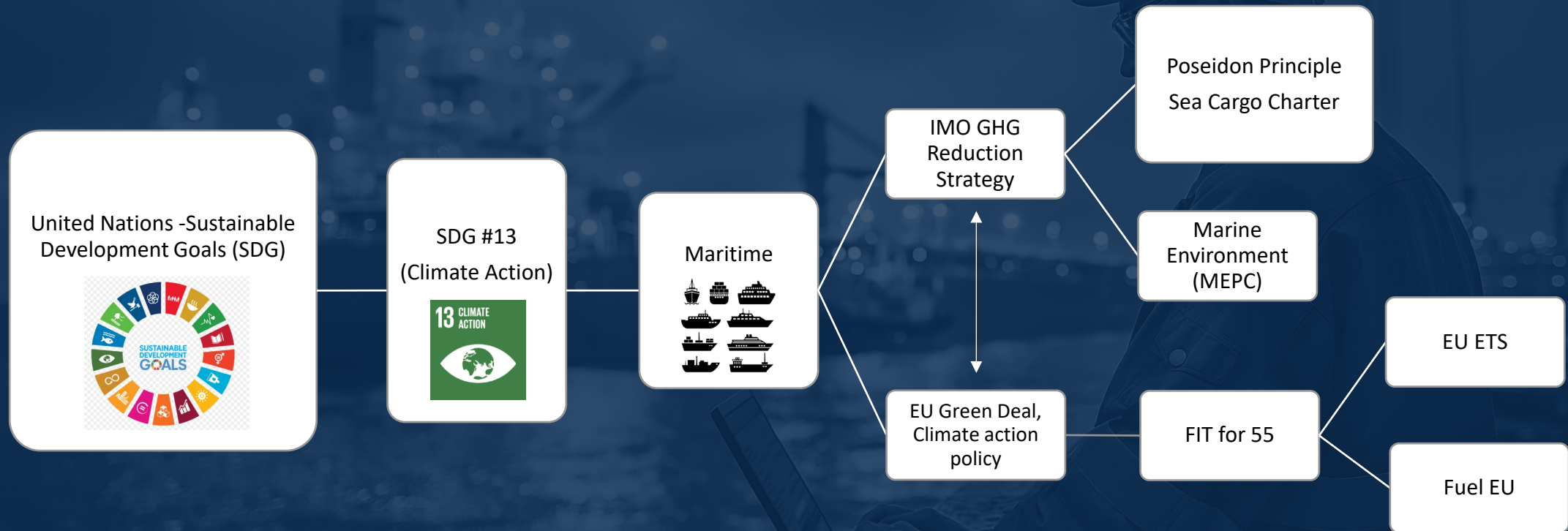
Our vision

5 minutes

Your solutions?

10 minutes

Background



New regulations in a nutshell

Regulation	Regulator	Date in force	Applies to	Description
MRV	EU	Active (1 Jan 2024 updates)	EU voyages (In / Out / Within)	<ul style="list-style-type: none"> - Monitoring Methane and Nitrous Oxide - Green House Gas emissions (TtW, tCO₂eq)
FuelEU	EU	1 Jan 2025	EU voyages (In / Out / Within)	<ul style="list-style-type: none"> - Fuel EU calculations will be under WtW consideration. - CO₂ regulations replaced by GHG emissions. - Use of shore power (for container & cruise ships only) - Voluntary pooling mechanism - WtW GHG intensity limits introduced with reducing targets. - GHG pricing under ETS and penalty driven performance standard will be implemented
EU ETS	EU	1 Jan 2026	EU voyages (In / Out / Within)	<ul style="list-style-type: none"> - EUAs purchased from 2026 will need to take CH₄ & N₂O in account (in addition to just CO₂) - The EU ETS will continue to be under TtW consideration. - EU ETS will be reviewed in 2026

Pain points and concerns

Uncertainty:

- New regulations hence not sure what to expect
- Requirements for cost to emissions are getting stringent, hence need to get familiar with responsibility ahead of time

Industry transition:

- Focus is shifting from fuel consumption onboard to fuel source and consumption

Impact to business:

- Paying for emissions in EU calls for complying with both FuelEU and EU-ETS, both currently following different methodology
- Same operational data used for different metrics
- Need to wait till end of year to submit the operational data, without any insights on what it is used for

Pressing Questions

How can I tell whether my fleet utilization with respect to Fuel EU?

What are my options to avoid non-compliance?

Can a Verifier do this all for us?

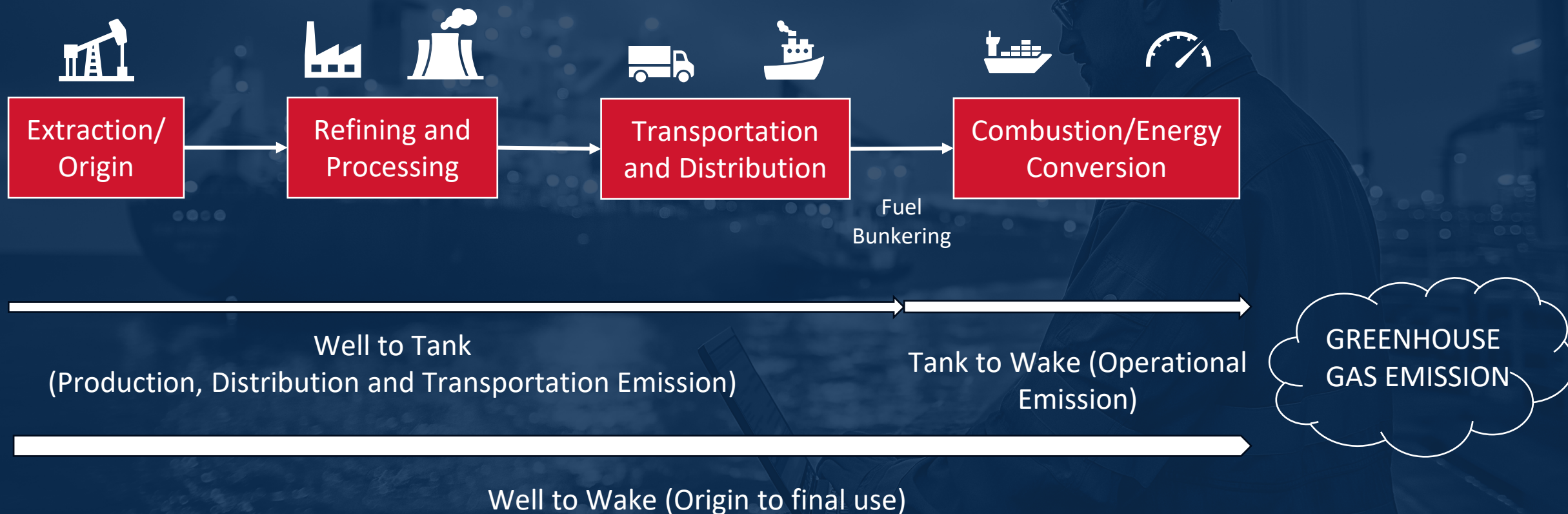
Can we report cumulative totals or must each voyage be reported individually?

What are the differences between EU ETS and Fuel EU?

How do we calculate and see the impact of Renewable Fuels of Non-Biological Origin (RFNBO)?

How do we see the balance and the penalty on a daily basis so we can determine impact of completed, current and future voyages?

Emission methodologies

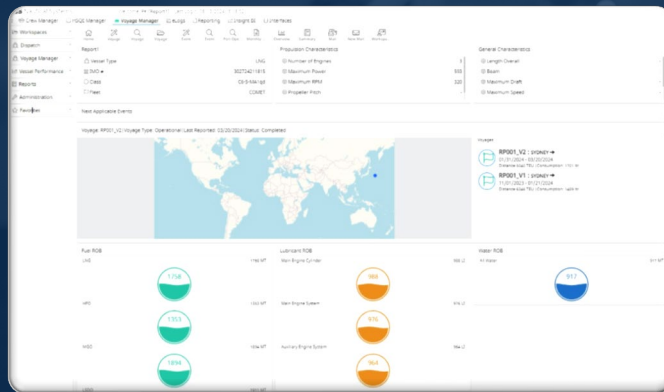


Our vision



Data Flow

ABS Wavesight Nautical Systems



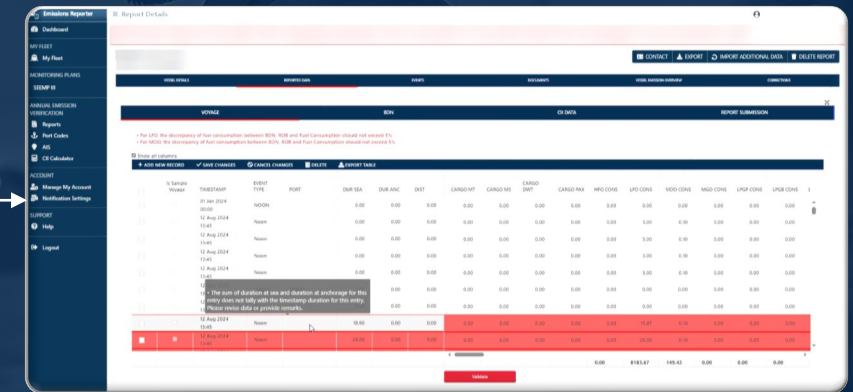
Voyage Management

ABS Wavesight Environmental Monitor



Continuous Monitoring

ABS Emission Reporter Portal



DCS / MRV Verification

Your Solutions?

What are you and your organization doing to meet...?

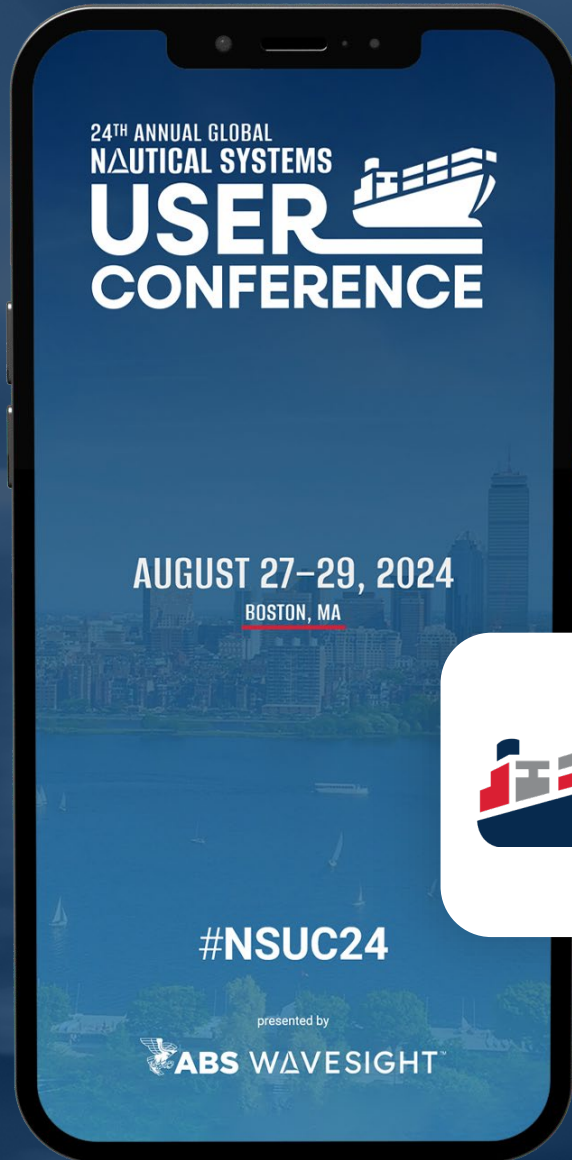
- Monitoring Plan Submission (31 August 2024)
- Monitoring Requirements (from 1 January 2025)
- Annual Reporting: ship-specific Fuel EU Report

How are you going to forecast the 2% reduction target in 2025 and succeeding years to 2050?

What tools or solutions are you using or planning to use to track and monitor emission-related responsibilities?

How are you calculating the impact of operations in the EU in terms of GHG emissions?

How are you capturing Well-to-Tank (WtT) and Tank-to-Wake (TtW) to get the overall Well-to-Wake (WtW) calculations?



How many points did you get?

Use the NSUC app leaderboard to check your score and keep participating throughout the conference for a chance to win prizes (and bragging rights)!

#NSUC24

THANK YOU

#NSUC24



ABS WAVESIGHT™



24TH ANNUAL GLOBAL
NAUTICAL SYSTEMS

USER CONFERENCE

