

24TH ANNUAL GLOBAL
NAUTICAL SYSTEMS

USER CONFERENCE



Voyage Management, Monitoring and Verification

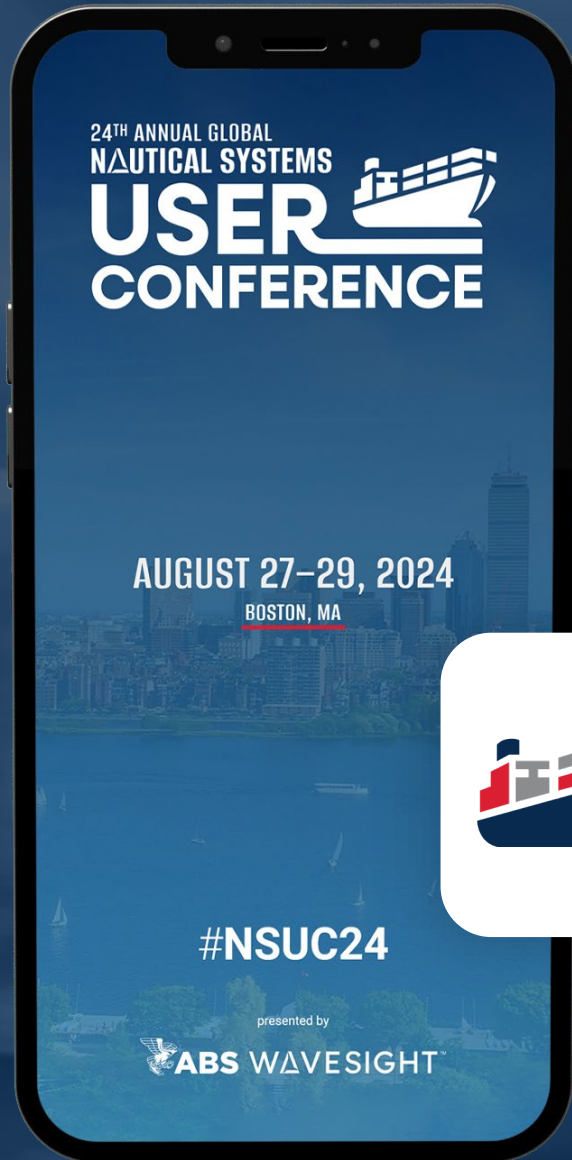
Divya | Samir | Anirvan | Bibhas

9/12/2024

Presented by



ABS WAVESIGHT™



GET ON THE LEADERBOARD!

REMINDER: You can earn points during this session! Submit your questions, answer polls and leave feedback on this presentation through the NSUC24 mobile app.

The more you use the app, the more points you earn. Winners will be announced daily.



Divya Iyer

Product Manager

Divya has 16+ years of experience in the maritime industry. Prior to joining ABS Wavesight, Divya worked as an engineer onboard oil/gas tankers with Chevron, where she sailed as a Second Assistant Engineer and later as a Vessel Performance Manager with Maersk Tankers managing fuel optimization and energy efficiency for their commercial pool vessels.



Samir Aragon

Product Manager

Prior to joining ABS Wavesight, Samir has spent 24 years in enterprise applications and platforms working in Product Management in various industries and verticals including Supply Chain and Logistics, Oil and Gas, Telecom, Automotive, Document Management, Process Automation, Travel and Pricing.



Anirvan Bhattacharjee

Product Delivery Manager

Working as a Product Owner and Subject Matter Expert for the NS Application specializing in Maintenance & Purchasing, Drydock, and Interface modules for more than 17 years.



Bibhas Sarkar

Director, Technology Applications

Bibhas has been pivotal in designing and leading technical teams for achieving business goals for over 28 years.

Voyage Data: An Open Forum

Voyage Data Sources

5 minutes

Pain points and concerns

10 minutes

Pressing questions

10 minutes

Our vision

5 minutes

Your solution?

10 minutes

Voyage Data Sources



Sensor Data



Vessel/Noon Reporting



Voyage Plans



Logbooks



Weather Data



Port Data



AIS



Weather Routing

Pain points and concerns

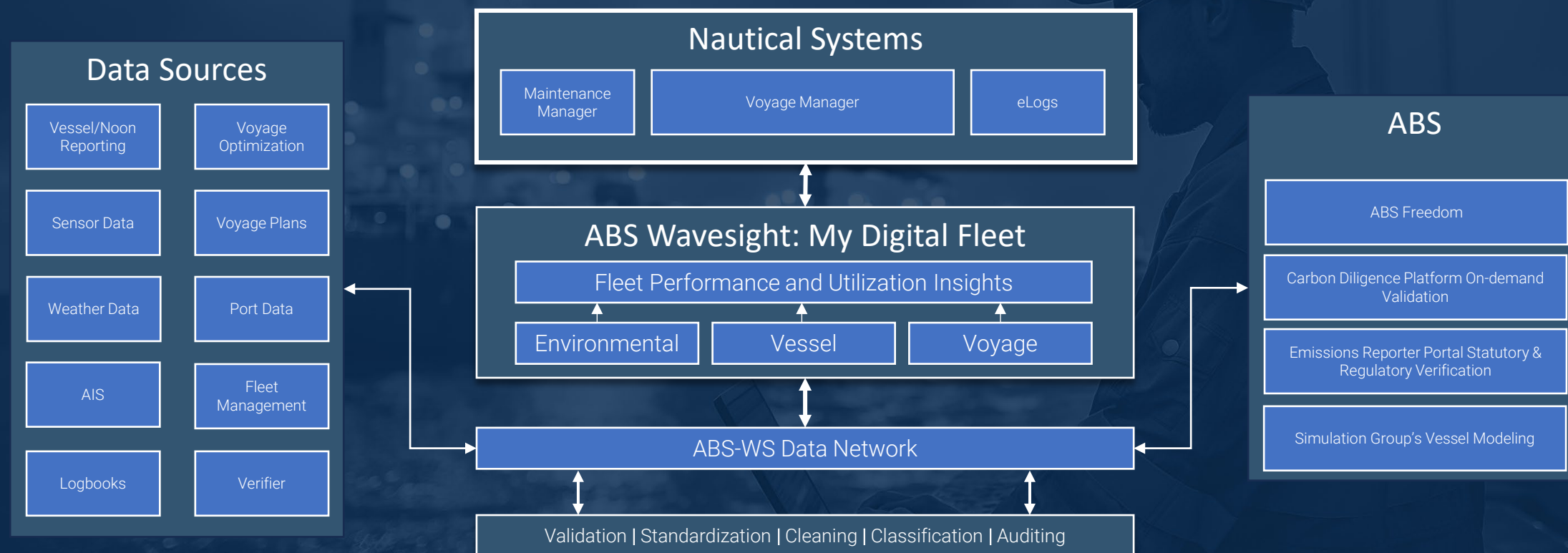
- Siloed data
- Lack of common definitions
- Data quality remediation
- Data out of sync
- Manual processes
- Interoperability and data exchange
- Data governance
- Data and functionality overlap
- Data veracity



Pressing Questions

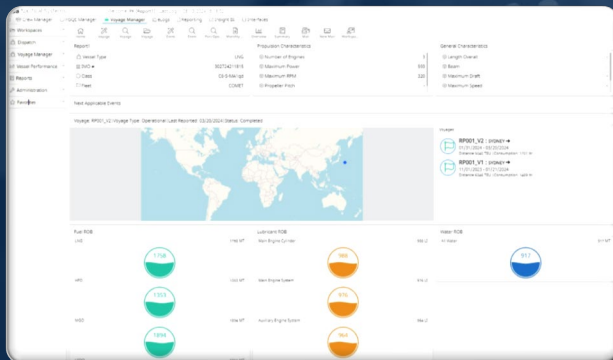
- How can we effectively use our vessel noon report data together with sensor data?
- How can we effectively combine the different data sources from different solution providers?
- How can we use historical voyage data to forecast future performance?
- How can we trace an error that a Verifier identifies back to the original source?
- How can we reduce the overall effort, and back-and-forth dealing with IMO DCS, EU MRV and other reporting requirements?
- Can we rely on a single source of truth for regulatory reporting?

Our Vision



Data Flow

ABS Wavesight
Nautical Systems



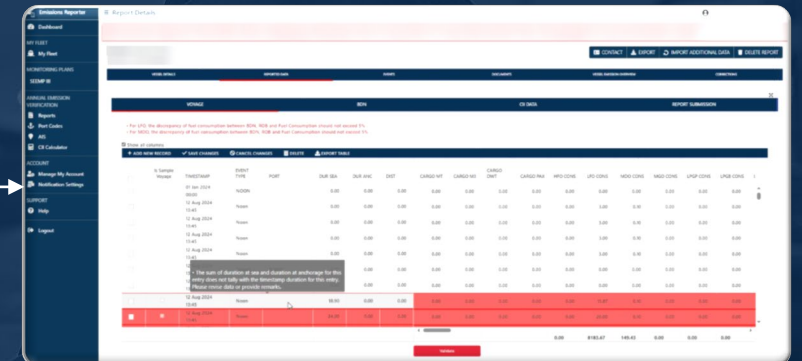
Voyage Management

ABS Wavesight
Data Validation
Environmental Monitor
Vessel Performance



Continuous Monitoring

ABS
Emission Reporter Portal



DCS / MRV Verification

Your Solutions?

How are you using AIS / sensor / high-frequency data?

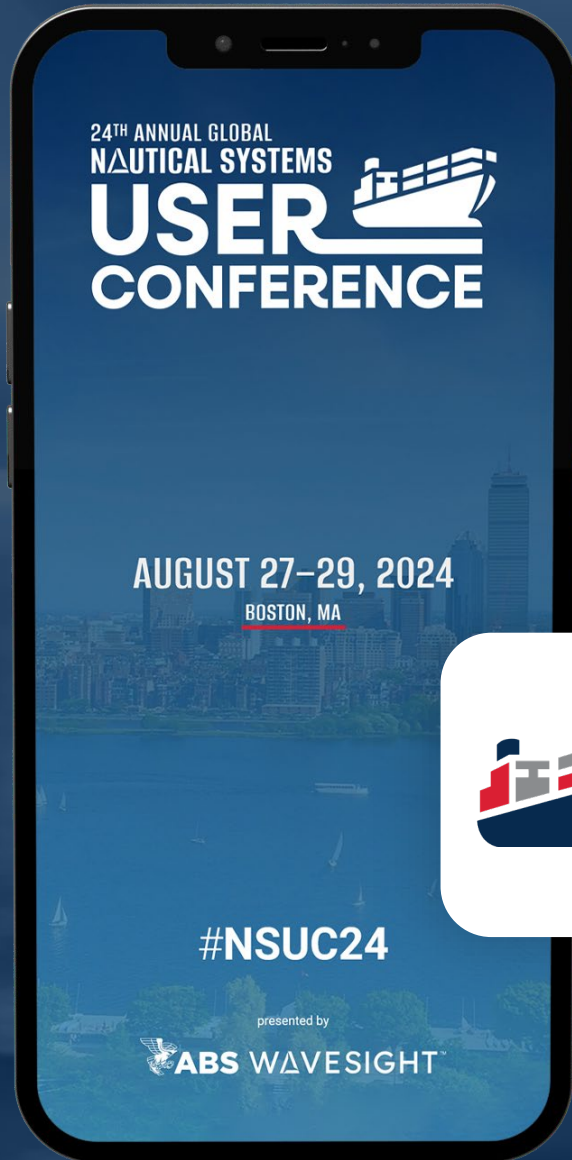
- Are you storing HF data, or down-sampling it?
- Where are you using sensor data to replace manual data entry?
- Does the crew have the option to choose what to use and where?
- Is data from the different sources accessible to office users via a BI tool?

How many tools or applications do you have today related to voyage management and monitoring?

Do your technical, operational, and performance managers use and share the same set of tools?

What's the application or tool that's most heavily used today?





How many points did you get?

Use the NSUC app leaderboard to check your score and keep participating throughout the conference for a chance to win prizes (and bragging rights)!

#NSUC24

THANK YOU

#NSUC24



ABS WAVESIGHT™



24TH ANNUAL GLOBAL
NAUTICAL SYSTEMS

USER CONFERENCE

